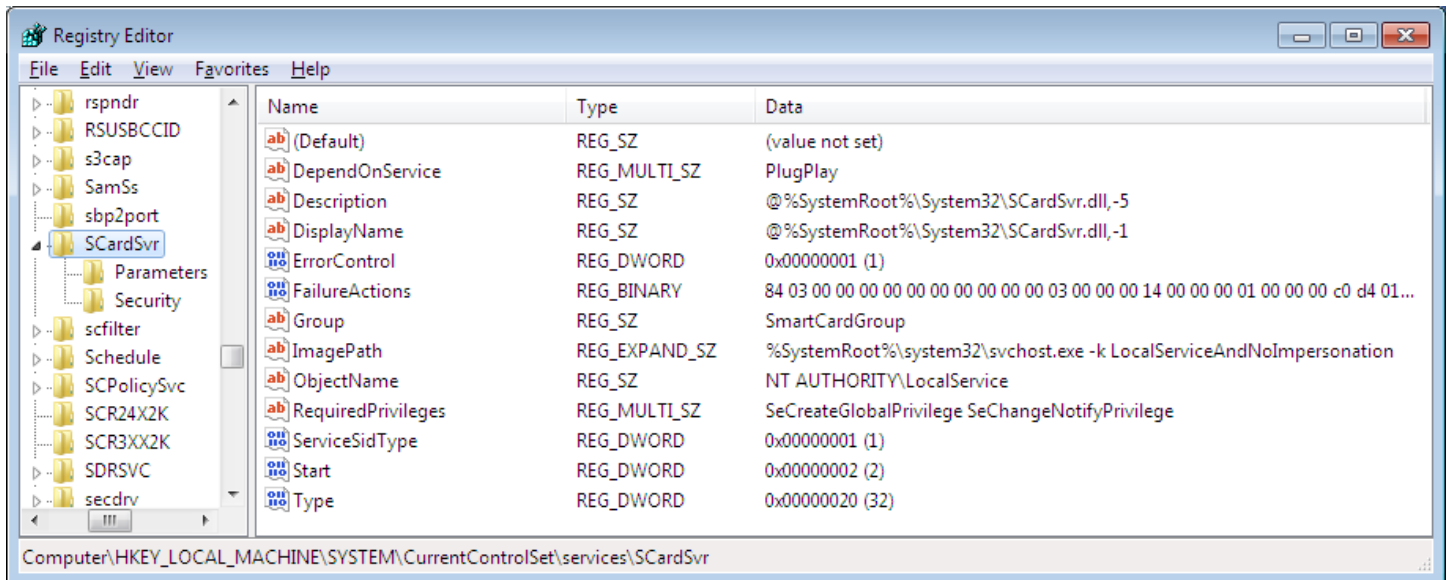


Windows 7 - 32 bit settings to reenable Smart Card Service

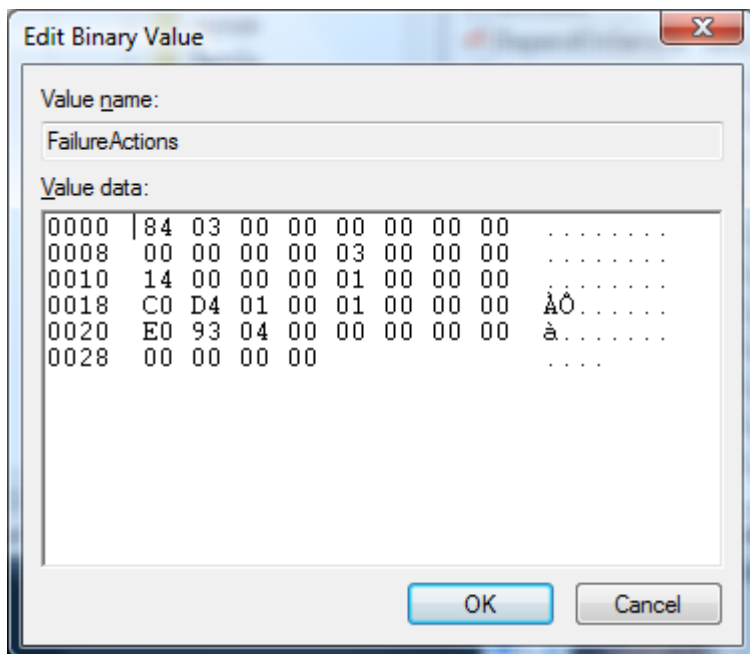
Click Start, type: **regedit.exe** in the white search box. Back up your registry before proceeding. Instructions: <http://windowsxp.mvps.org/registry.htm>

Navigate down to: HKEY_LOCAL_MACHINE\SYSTEM\CurrentControlSet\Services\SCardSvr

Mirror your computer to these settings.

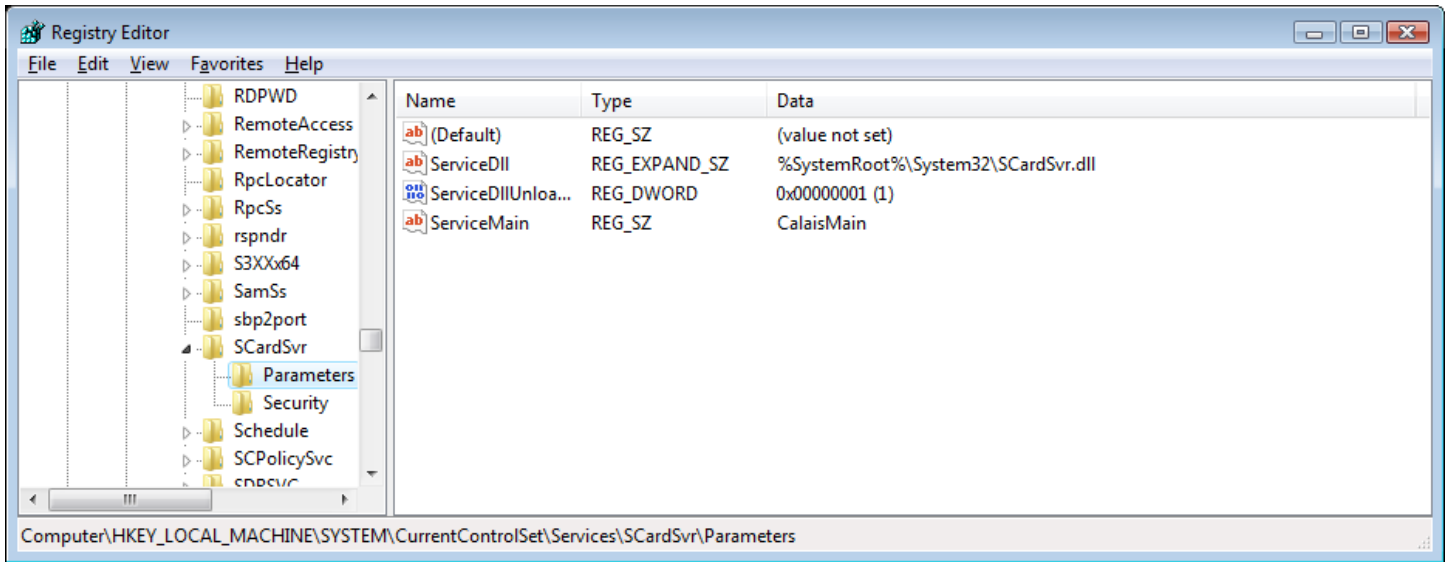


FailureActions Data

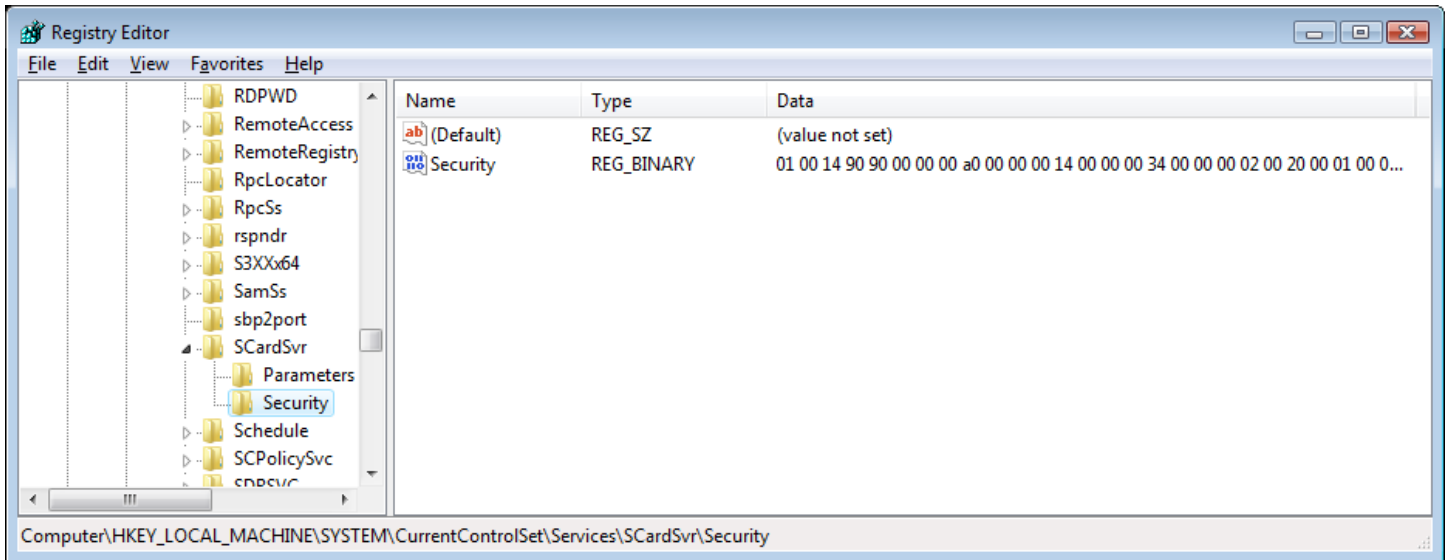


Windows 7 - 32 bit settings to reenble Smart Card Service

Go to the Parameters folder to verify this information.



Go to Security folder to verify this information



Windows 7 - 32 bit settings to reenable Smart Card Service

Here is the binary information for the Security folder. Follow the numbers down the left side.

